



Product Specifications

<b>Construction</b>	Textured Loop
<b>Backing</b>	Standard Back
<b>Dye Method</b>	Solution Dyed
<b>Fiber Type</b>	Encore® SD Ultima® (with recycled content)
<b>Face Weight</b>	26 oz./sy (882 grams/m2)
<b>Pile Density</b>	8283 oz./y3 (307.14 kg/m3)
<b>Pattern Repeat</b>	N/A
<b>Gauge</b>	1/8 (3.15 rows/cm)
<b>Stitches Per Inch</b>	7.33 stitches/in (2.89 stitches/cm)
<b>Standard Width</b>	12 ft 3.66 m
<b>Standard Adhesive</b>	Commercialon Premium Carpet Adhesive
<b>Standard Warranties</b>	Encore SD Ultima Fiber Standard Back
<b>Optional Warranties</b>	Endure Plus TitanBac Plus

Special Technologies

<b>ProSept® Antimicrobial</b>	Optional
<b>ProTex® Soil Release</b>	Standard
<b>Sentir® Odor-Blocker</b>	Optional

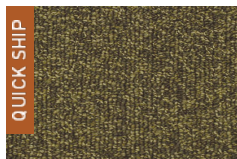
Environmental Specifications & Tests

<b>NSF 140:</b>	Gold Certified
<b>Total Recycled Content</b>	25%
<b>Flooring Radiant Panel</b>	Class 1
<b>Smoke Density</b>	Less than 450 flaming (ASTM E 662)
<b>Static Test</b>	Less than 3 kv (AATCC-134)
<b>ADA Compliance</b>	Compliant For Accessible Routes
<b>Pill Test</b>	Yes
<b>Lightfastness</b>	Yes

Colorways



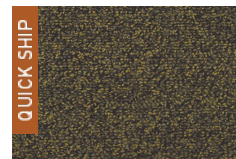
RLY01 Wicker



RLY02 Heather



RLY03 Mineral Gray



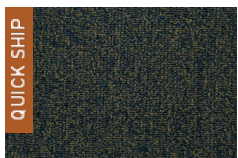
RLY04 Amber Ash



RLY06 Fall foliage



RLY07 Painted Des...



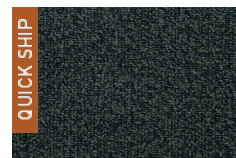
RLY09 Niagara



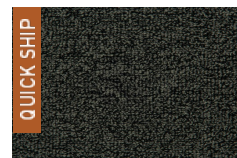
RLY10 Glacier Blue



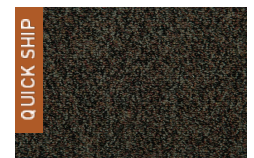
RLY11 Teal Slate



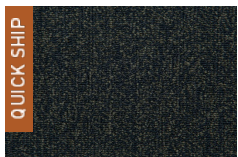
RLY12 Watercolor



RLY13 Stepping St...



RLY14 Ember Glow



RLY15 Night Sky



RLY16 Cordovan