

**M** | **Linea 2** PRODUCT SPECIFICATIONS



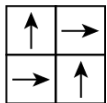
<b>STYLE NUMBER</b>	10383
<b>PRODUCT TYPE</b>	Modular
<b>CONSTRUCTION</b>	Pattern Loop
<b>FIBER TYPE</b>	Eco Solution Q® Nylon
<b>DYE METHOD</b>	100% Solution Dyed
<b>PRIMARY BACKING</b>	Non-Woven Synthetic
<b>SECONDARY BACKING</b>	Ecworx
<b>PROTECTIVE TREATMENTS</b>	SSP® Shaw Soil Protection

<b>PRODUCT SIZE</b>	24 inches x 24 inches	<b>Metric Units</b>	60.96 cm x 60.96 cm
<b>GAUGE</b>	1/10 inches		39.37 per 10 cm
<b>STITCHES</b>	10 per inches		39 per 10 cm
<b>FINISHED PILE THICKNESS</b>	0.099 inches		2.51 mm
<b>AVERAGE DENSITY</b>	5818 oz/yd <sup>3</sup>		9.31
<b>TOTAL THICKNESS</b>	0.25 inches		6.35 mm
<b>TUFTED YARN WEIGHT</b>	16 oz/yd <sup>2</sup>		542.5 g/m <sup>2</sup>
<b>GSA APPROVED PRODUCT</b>	Yes		

<b>US Units</b>	24 inches x 24 inches
	1/10 inches
	10 per inches
	0.099 inches
	5818 oz/yd <sup>3</sup>
	0.25 inches
	16 oz/yd <sup>2</sup>
	Yes

<b>Metric Units</b>	60.96 cm x 60.96 cm
	39.37 per 10 cm
	39 per 10 cm
	2.51 mm
	9.31
	6.35 mm
	542.5 g/m <sup>2</sup>

## Installation Methods



1/4 Turn

## Performance Testing

<b>PILL TEST</b>	Pass
<b>RADIANT PANEL</b>	Class I
<b>NBS SMOKE</b>	Less than 450
<b>ELECTROSTATIC PROPENSITY</b>	Less than 3.5 kv
<b>CRI GREENLABEL PLUS</b>	GLP9968
<b>ADA COMPLIANCE</b>	>0.6, meets the recommended static coefficient of friction for ADA walking surfaces and accessible routes